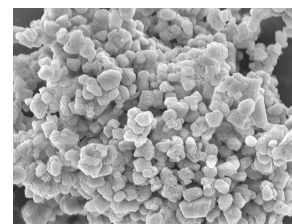


# TITANIUM OXIDE - TiO<sub>2</sub>



CAS N°: 1317-70-0 (anatase) ; 1317-80-2 (rutile)

MAIN CHARACTERISTICS		
Characteristics	Units	Results
<b>Colour</b> <b>Structure</b> <b>Specific surface</b> <b>Carr Index (flowability)</b> IC < 15 % : excellent 15 < IC < 25 % : medium IC > 25 % : bad	NA NA g.cm <sup>-2</sup> %	Yellow powder Rutile/Anatase 82,0 ± 10% 34
PARTICLE SIZE DISTRIBUTION		CHEMICAL COMPOSITION
<p> <b>d(10) = 0.31 µm</b>      <b>d(50) = 0.63 µm</b>      <b>d(90) = 1.35 µm</b> </p>		Impurities analysis on demand

*Every material proposed by Marion Technologies can be adjusted according to your specifications in order to meet your needs.*

*If you require any information or quote, please do not hesitate to contact us.*